



Elite
LANDSCAPE

Shaping Better *Outdoors*

“Concept to Completion”

**CORPORATE
PROFILE**

2026



LANDSCAPE



IRRIGATION



HARDSCAPE



MEP



WATER FEATURES



SWIMMING
POOLS

DESIGN | BUILD | SUSTAIN

 www.elitelandscapeuae.com

Ref: EL/PQ/P417-02

Date: 20 JAN 2026

Attn M/s.:

Dear Sir,

Elite Landscape L.L.C. was established in 2019 and is a fully integrated ISO 9001:2015 certified Landscape Specialist Contractor and irrigation Specialist Contractor, Undertaking Landscape Development Works on Business & Mercantile Buildings, Residential Buildings, Industrial Parks, and Public Infrastructure such as Parks and Roads, and Urban Landscape. Etc.

We would like to share our Company Profile and Pre-Qualification Document with you, which showcase our accomplishments and give you a glimpse of our capabilities and strengths in Landscaping Works in the UAE.

We are optimistic in meeting and exceeding all your Project Requirements in Landscape Contracting and look forward to receiving your enquiries in the near future since **2019**. Having reposed great faith in the future of the UAE, & we look forward to participating in its continuing success. Highest emphasis is placed on work quality, and our name has become synonymous with this in all its different fields of operation.

We shall continue to move forward, driven by our strong and ambitious growth plan.

It is our understanding that, to become globally competitive, the principles of innovation and best-practice work should apply.

For Elite Landscape L.L.C,

A handwritten signature in blue ink, appearing to read "Seby Joy", written over a horizontal line.

Seby Joy Karanchirakkal.
General Manager

TABLE OF CONTENTS

- **Introduction**
- **Outline of services**
- **Company policy**
- **Quality policy**
- **Legalities**
- **ISO Certification**
- **Organization chart and key staff**
- **Field of Expertise**
- **Machinery and equipment's**
- **Our client lists**
- **Our projects**
- **Previous approval**
- **In-house designs gallery**
- **Previous project**
- **HSE policy**



WHO ARE WE?

We are a special team who having the skills to create or develop nature around you with an artistic touch. Our ultimate Aim is to deliver the landscape needs of the client with maximum efficacy.

Elite Landscape is a multi-faceted organization having operations in widely differing areas of landscape business like landscape & irrigation design and construction, Relocation and reinstatement, water scape, swimming pools, hardscape, different flooring, feature walls, artificial grass, and structures, etc.

OUR VISION

To change the industry perspective to "landscape is not simply a construction activity, but it is more about nature, art, creativity, and connectivity of minds".

OUR MISSION

To establish a sustainable firm that can deliver a beautiful landscape to clients with a natural feeling.

COMPANY DETAILS

Elite Landscape LLC

Office No. 207, Al Lotus Building, Al Chaabis, Dubai

Email: info@elitelandscapuae.com.

projects@elitelandscapuae.com

Web: <https://www.elitelandscapuae.com/>

LEGAL FORM

Limited Liability Company (LLC)

YEAR OF BUSINESS FOUNDED:

2019

BANK:

Abu Dhabi Commercial Bank,

Al Bustan Branch, Dubai.

INSURANCE:

Orient Insurance PJSC (Head Office) P.O. Box 27966, Dubai, UAE

Tel: +971 4 253 1300, Fax: +971 4 263 1500

What we can do for you





OUR SERVICES.

Elite Landscape L.L.C. is a full-service Landscape Company based in Dubai, UAE. Involved in designing, constructing, and maintaining Softscape, Hardscape, Garden lighting, Water Feature, Irrigation System, and Swimming Pool.

We have been in the Landscaping Industry for more than 5 years, and we pride ourselves on being a competent and innovative Landscape Contractor in the UAE.

Our goal is to fulfil the needs of the customer by providing timely, quality services and products. The greatest objective of Elite Landscape L.L.C. is to become the premier landscape company in the UAE by meeting the needs of its customers and employees, while promoting professionalism in the landscape industry.

Our organization is built on a strong set of values and a genuine dedication to providing the highest quality landscape management services and landscape installation services. With more than 5 years of background in landscape contracting, our professionals understand the business from every angle and incorporate the perspectives of our customers in order to produce the best results.

We have a track record of effectively attending to the many details necessary to perform our services efficiently. We believe in the principle that taking excellent care of our employees will result in our employees taking excellent care of our customers.

We also feel that it is our responsibility to constantly find better and more efficient ways to deliver an exceptional product and to provide better prices for our customers.

Irrigation

- ✓ Automatic irrigation works
- ✓ Irrigation diversion works
- ✓ Irrigation reinstatement works
- ✓ Irrigation central control system works
- ✓ Irrigation infra works
- ✓ Irrigation pump room and water tank works

Designing:

- ✓ Landscape concept design in 2D and 3D.
- ✓ irrigation system design.

Water scape

- ✓ Water feature
- ✓ Swimming pool

Maintenance:

- ✓ Landscape and irrigation operation & maintenance

Softscape

- ✓ Earth works for planting
- ✓ Removal of plants and relocation
- ✓ Reinstatement of soft scape
- ✓ Planting of new plants

Hardscape

- ✓ Interlock and paver
- ✓ Hardscape structure like Gazebo, Pergola and Cabana.
- ✓ Planter boxes and gabion walls.
- ✓ Artificial grass, rubber flooring, wooden decking etc



Elite Landscape Company Policy

Policy Title: Landscaping Contractors Policy

Effective Date: 31/12/2024

Last Revised: 1/01/2024

Policy Owner: Facilities Management / Operations Department

1. Purpose

The purpose of this policy is to establish clear guidelines for the engagement, conduct, and responsibilities of employees and subcontractors working with M/s Elite Landscape LLC. This policy ensures that all landscaping services are performed to the highest standards of quality, safety, and environmental responsibility.

2. Scope

This policy applies to all employees, external supply laborer's hired by Elite for landscape maintenance, design, and construction services. It includes both one-time and ongoing contracted landscaping works.

3. Definitions

Services: Any landscaping-related work performed, including but not limited to mowing, weeding, pruning, irrigation, fertilization, and landscape design.

4. Policy Statement

- All landscape works must comply with the terms outlined in their individual contracts and their policy.
- Landscaping services must be conducted according to industry best practices, with emphasis on safety, efficiency, and environmental stewardship.
- All work must be performed with minimal disruption to other contractor daily operations.

5. Responsibilities

- Perform all landscaping services according to the agreed scope of work.
- Ensure all work complies with safety standards and environmental regulations.
- Maintain a clean work environment by removing debris and trash daily.
- Notify the Facilities Manager or assigned contact of any safety hazards or potential issues that could affect the work.
- Provide proof of valid insurance, including liability and workers' compensation, as required by the project
- Communicate any special requirements or expectations for specific projects, such as work hours, noise restrictions, or environmental concerns.
- Review contractor performance and address any concerns promptly.

6. Safety and Environmental Guidelines

- The elite team adheres to all applicable safety regulations, including OSHA standards.
- We wear personal protective equipment (PPE), such as gloves, safety glasses, ear protection, and appropriate footwear, as necessary.
- All equipment used must be well-maintained and in safe working condition.
- Hazardous materials, such as chemicals for fertilization or pest control, must be handled and disposed of according to local regulations.



- Elite minimizes the environmental impact of their work, including water usage and chemical application, in alignment with [Company Name]'s sustainability goals.

7. Quality Control and Performance Expectations

- Elite teams maintain a high standard of work quality, ensuring that all services are completed to the satisfaction of [Company Name]'s designated representative.
- All work must be completed promptly, with minimal disruption to the property or surrounding areas.
- Elite has a proper reporting system that works daily, weekly, and monthly to track progress and forecast

8. Contractor Selection and Engagement

- Elite has a systematic procedure for employee and sub-contractor and process of selection, which may include the submission of proposals, interviews, and references.
- We will be awarded based on factors such as experience, qualifications, pricing, and previous performance.
- We, the elite reserves all the right to terminate any sub-contractor or employee agreement for failure to meet performance standards or adhere to this policy.

9. Insurance and Liability

- We have adequate insurance coverage for our employees, including: medical, General liability insurance, covering any damages to property or third-party property caused by the contractor's work.
- Workers' compensation insurance, protecting employees of the contractor in case of injury.

10. Compliance with Laws

- We are complying with all local, state, and federal laws and regulations related to landscaping work, including environmental regulations, labor laws, and zoning ordinances.
- Any violation of applicable laws may result in termination of the contractor agreement and potential legal action.

11. Payment Terms

- Payment for services will be made according to the terms specified in the contractor agreement.
- Invoices must be submitted on time and must include a detailed description of services rendered, along with any applicable receipts for materials used.

12. Review and Revision

- This policy will be reviewed annually to ensure compliance with industry standards and legal requirements. Any changes will be communicated to all relevant parties, and updated agreements may be required.



QUALITY POLICY

All ELITE LANDSCAPE L.L.C. employees are guided by this Quality Policy in all decisions and actions daily. Our goal is to provide the following:

- A product and service solution that meets our customers' expectations.
- A highly trustworthy and ethical work environment that provides long-term employment, development, and growth for all employees.
- Continual improvement in all that we perform.

The ELITE LANDSCAPE L.L.C. management realizes that success in the future depends upon achieving these goals by:

- Promoting a work ethic that is predicated upon quality.
- Providing all employees with the training and tools necessary to perform their jobs as efficiently and effectively as possible.
- Providing the necessary resources and personal support required for the successful implementation of ISO 9001:2015 Quality Management System and Quality Objectives.

ELITE LANDSCAPE L.L.C. will not compromise the integrity of our services in an attempt to satisfy short-term goals. We are committed to long-term growth, profitability, and employment for our personnel. We will achieve this by utilizing a business approach that takes into account the needs of all our stakeholders (e.g., employees, partners, suppliers, customers, and the environment) and which encompasses an attitude of "Quality First".
Only.

Yours sincerely,
For Elite Landscape L.L.C

Seby Joy.
General Manager



COMPANY LEGALITIES



رخصة تجارية Commercial License

تفاصيل الرخصة / License Details

License No.	866460	رقم الرخصة
Company Name	ELITE LANDSCAPE L.L.C	اسم الشركة
Business Name	ELITE LANDSCAPE L.L.C	الاسم التجاري
License Category	Dep. of Economic Development	فئة الرخصة
Legal Type	Limited Liability Company(LLC)	الشكل القانوني
Expiry Date	01/01/2027	تاريخ الإصدار
D&B D-U-N-S® N	رقم العالمى	رقم الرخصة الام
Register No.	1470908	عضوية الغرفة
Issue Date	02/01/2020	تاريخ الإصدار
Main License No.	866460	رقم الرخصة الام
DCCI No.	333558	عضوية الغرفة

الاطراف / License Members

Share / الحصص	Role / الصفة	Nationality / الجنسية	Name / الإسم	No./ رقم الشخص
	مدير / Manager	الهند / India	انوب كوندور فالابيل جوبالاكريشنان ANOOP KUNDUR VALAPPIL GOPALAKRISHNAN	1051845
	مدير / Manager	الهند / India	سيبي كارانشيراكال جوى SEBY KARANCHIRAKKAL JOY	1051848

أنشطة الرخصة / License Activities

Activity	Status	الحالة	النشاط
Swimming Pools Installation Works	Active	فعال	أعمال تركيب أحواض السباحة
Land Preparation & Irrigation Systems Works & Maintenance	Active	فعال	أعمال إعداد الأراضي وتنفيذ شبكات الري وصيانتها
Swimming Pools Maintenance	Active	فعال	صيانة احواض السباحة
Landscape & Gardening works & Maintenance	Active	فعال	أعمال تنفيذ البستنة والتجميل الزراعي والصيانة

Print Date 14/01/2026 11:16 تاريخ الطباعة

Receipt No.

رقم الإيصال



يمكنك الآن تجديد رخصتك التجارية من خلال الرسائل النصية القصيرة، أرسل رقم الرخصة إلى 6969 (دو) / اتصالات) للحصول على اذن الدفع.

Now you can renew your trade license by sending a text message (SMS). Send your trade license

number to 6969 (Du / Eticalat) to receive payment voucher

Get FREE access to Zoho One for the first year
احصل على زوهو ون مجاناً للسنة الاولى
Zoho.com/det



وثيقة إلكترونية معتمدة وصادرة بدون توقيع من دائرة الاقتصاد والسياحة في دبي. لمراجعة صحة البيانات الواردة في الرخصة يرجى مسح رمز الاستجابة السريعة

This is a certified e-document issued without signature by the department of Economy and Tourism. Kindly scan the QR Code to verify the certificate



		العنوان / Address	
Phone No	971-04-3299686	تليفون	P.O. Box 85547 صندوق بريد
Fax No	971-04-2223498	فاكس	Parcel ID 128-422 رقم القطعة
Mobile No	971-56-5704704	هاتف متحرك	Email Info@elitelandscapuae.com البريد الإلكتروني
ملك احمد رضا غلوم عباس الانصاري - الخبيصي OFF-207 مكتب رقم			
		الملاحظات / Remarks	
تم نقل الموقع في 28/11/2021			

Print Date 14/01/2026 11:16 تاريخ الطباعة

Receipt No.

رقم الإيصال



يمكنك الآن تجديد رخصتك التجارية من خلال الرسائل النصية القصيرة، أرسل رقم الرخصة إلى 6969 (دو/ اتصالات) للحصول على اذن الدفع.

Now you can renew your trade license by sending a text message (SMS). Send your trade license number to 6969 (Du / Eticalat) to receive payment voucher.

Get FREE access to Zoho One for the first year
احصل على زوهو ون مجاناً للسنة الأولى



Zoho.com/det

وثيقة إلكترونية معتمدة وصادرة بدون توقيع من دائرة الاقتصاد والسياحة في دبي. لمراجعة صحة البيانات الواردة في الرخصة يرجى مسح رمز الاستجابة السريعة
This is a certified e-document issued without signature by the department of Economy and Tourism. Kindly scan the QR Code to verify the certificate

ملحق الشركاء
Partners

تفاصيل الرخصة / License Details

رقم الرخصة 866460 License No. الرقم العالمي 0 D&B D-U-N-S ® No.

اصحاب الرخصة / License Partners

الإسم / Name	الجنسية / Nationality	مسلسل الشخص / Sr. No.	الحصص / Share
سيبي كارانشيراكال جوي / Seby Karanchirakkal Joy	الهند / India	1051848	40.0000000%
رياض ممدكوييا بوليكال / Riyas Mammedkoya Pulikkal	الهند / India	765854	30.0000000%
انوب كوندور / Anoop Kundour Valappil Gopalakrishnan	الهند / India	1051845	30.0000000%

فالابيل جوبالاكريشنان

Print Date 14/01/2026 11:16 تاريخ الطباعة

Receipt No.

رقم الإيصال

الإمارات
THE EMIRATES

يمكنك الآن تجديد رخصتك التجارية من خلال الرسائل النصية القصيرة، أرسل رقم الرخصة إلى 6969 (دو) / اتصالات) للحصول على اذن الدفع.

Now you can renew your trade license by sending a text message (SMS). Send your trade license number to 6969 (Du / Eticalat) to receive payment voucher.

Get FREE access to Zoho One for the first year

احصل على زوهو ون مجاناً للسنة الأولى



Zoho.com/det

وثيقة إلكترونية معتمدة وصادرة بدون توقيع من دائرة الاقتصاد والسياحة في دبي. لمراجعة صحة البيانات الواردة في الرخصة يرجى مسح رمز الاستجابة السريعة

This is a certified e-document issued without signature by the department of Economy and Tourism. Kindly scan the QR Code to verify the certificate

شهادة شهر قيد شركة في السجل التجاري
Commercial Register

تفاصيل القيد / Register Details

Main Lice. Nr	866460	رقم الرخصة الأم	Register No.	1470908	رقم القيد
Business Name	ELITE LANDSCAPE L.L.C			ايليت لتجميل الحدائق ذ.م.م	الاسم التجاري
Legal Type	Limited Liability Company(LLC)			ذات مسؤولية محدودة	الشكل القانوني
Expiry Date	01/01/2027	تاريخ الإنتهاء	Reg. Date	28/11/2019	تاريخ الإصدار
D&B D-U-N-S ® No.					الرقم العالمي

تفاصيل رأس المال / Capital Details

Nominated					الإسمى
Paid				300,000	المدفوع
No. of Shares				300	عدد الأسهم
Currency	UAE Dirhams			درهم إماراتي	العملة

عنوان الرخصة / License Address

مكتب رقم 207-OFF ملك احمد رضا غلوم عباس الانصاري - الخبيصي

عنوان السجل التجاري / Commerce Address

مكتب رقم 207-OFF ملك احمد رضا غلوم عباس الانصاري - الخبيصي

أنشطة السجل / Register Activities

Land Preparation & Irrigation Systems Works & Maintenance	أعمال إعداد الأراضي وتنفيذ شبكات الري وصيانتها
Landscape & Gardening works & Maintenance	أعمال تنفيذ البستنة والتجميل الزراعي والصيانة
Swimming Pools Maintenance	صيانة أحواض السباحة
Swimming Pools Installation Works	أعمال تركيب أحواض السباحة

Print Date 14/01/2026 11:16 تاريخ الطباعة

Receipt No.

رقم الإيصال



يمكنك الآن تجديد رخصتك التجارية من خلال الرسائل النصية القصيرة، أرسل رقم الرخصة إلى 6969 (دو/ اتصالات) للحصول على اذن الدفع.

Now you can renew your trade license by sending a text message (SMS). Send your trade license

number to 6969 (Du / Eticalat) to receive payment voucher

Get FREE access to Zoho One for the first year
احصل على زوهو ون مجاناً للسنة الاولى
Zoho.com/det



وثيقة إلكترونية معتمدة وصادرة بدون توقيع من دائرة الاقتصاد والسياحة في دبي. لمراجعة صحة البيانات الواردة في الرخصة يرجى مسح رمز الاستجابة السريعة

This is a certified e-document issued without signature by the department of Economy and Tourism. Kindly scan the QR Code to verify the certificate

شهادة تسجيل العضوية

Membership Certificate

License no.	866460	رقم الرخصة	866460
Membership no.	333558	رقم العضوية	333558
Registration no.	1470908	رقم السجل التجاري	1470908
Business Name	ELITE LANDSCAPE L.L.C	الاسم التجاري	إيليت لتجميل الحدائق ذ.م.م
Legal Status	Limited Liability Company(LLC)	الشكل القانوني	ذات مسؤولية محدودة
Activity	Land Preparation & Irrigation Systems Works & Maintenance Landscape & Gardening works & Maintenance Swimming Pools Maintenance Swimming Pools Installation Works	نوع النشاط	أعمال إعداد الأراضي وتنفيذ شبكات الري وصيانتها أعمال تنفيذ البستنة والتجميل الزراعي والصيانة صيانة أحواض السباحة أعمال تركيب أحواض السباحة
Member Since	02/01/2020	تاريخ الإنساب	02/01/2020
Date of Issue	02/01/2020	تاريخ الإصدار	02/01/2020
Expiry Date	01/01/2027	تاريخ الإنتهاء	01/01/2027

Remarks

This certificate shall be invalid incase of any alteration without chamber's authorization

For online verification of this Certificate, please visit our website
<http://www.dubaichamber.ae/verify>

غرفة تجارة وصناعة دبي
Dubai Chamber of Commerce & Industry

P.O. Box 1457 - Dubai, U.A.E. | Tel (Within UAE) 800 CHAMBER (800 2426237) | Tel (Outside UAE) (+971) 4 2280000
هاتف فاكس (+971) 4 2211646 | customercare@dubaichamber.ae | www.dubaichamber.ae

الملاحظات

تعتبر هذه الشهادة لاغية في حال أي كسح أو تعديل عليها دون اعتماد ذلك من الغرفة

للتأكد من صحة بيانات الشهادة يرجى الرجوع إلى موقع الغرفة
<http://www.dubaichamber.ae/verify>

eEstablishment Card

بطاقة الكترونية

GENERAL DIRECTORATE OF RESIDENCY AND FOREIGNERS AFFAIRS - DUBAI
FEDERAL AUTHORITY FOR IDENTITY, CITIZENSHIP, CUSTOMS & PORT SECURITY

الهيئة الاتحادية للهوية والجنسية والجمارك وأمن المنافذ
الإدارة العامة للإقامة وشؤون الأجانب - دبي

الإسم: ايليت لتجميل الحدائق ذ.م.م.

Name: ELITE LANDSCAPE L.L.C

المخول بالتوقيع: RYAS MAMMEDKOYA
PULIKKAL
SEBY
KARANCHIRAKKAL JOY

الصفحة: Partner

Partner

المدينة: DUBA المنطقة Hor Al

هاتف: 056-5704704

تاريخ الإنتهاء: 2027-01-13

بطاقة المنشأة
MOL
2/1/733171

09432371

United Arab Emirates

United Arab Emirates

• هذه البطاقة ملك للإدارة العامة للإقامة وشؤون الأجانب - دبي وإستخدامها يخضع للأحكام والشروط.
• على حامل هذه البطاقة إبرازها للجهات المعنية عند الطلب.
• يجب إبلاغ جهة الإصدار في حالة فقدان البطاقة.
• يرجى من يعثر على هذه البطاقة إعادتها الى اقرب مركز شرطة.

• This card belongs to General Directorate of Residency and foreigners affairs – Dubai and the use is subject to terms and conditions.
• The holder of this card presents it to concerned authorities upon request.
• Issuers must be notified in case of card loss.
• If found please return to the nearest police station.

خدمة أمر - هاتف: 800 5111 ٤٣٣٣ ص.ب: دبي - إ.ع.م.
Tel.: 800 5111 Amer Service P.O.Box: 4333 Dubai - U.A.E.
Website: www.dnrd.ae



للتواصل مع الإدارة يرجى
8005111 / 04- هاتف:
For inquiry please call AMER Service
Tel : 04-3139999 / 8005111



كن آمنا في مجتمعك, تعاون مع الأمنين
A safer neighbourhood is a safer
Toll free 8004888 www.alameen.ae



ISO certification



CERTIFICATE

This is hereby certified that the Quality Management System of

ELITE LANDSCAPE L.L.C

Office Number 206, Alphamed Building, Hor Al Anz East, Dubai, UAE

Has been found to comply with the requirements of

ISO 9001: 2015

This certificate is applicable for the following scope:

**Landscape, Gardening Works & Maintenance, Land Preparation, Irrigation
System Works & Maintenance**

Certificate Number: KAQM202412026

Date of initial registration:	12 December 2024
Surveillance audit 01 on/before:	12 November 2025
Surveillance audit 02 on/before:	12 November 2026
Recertification due:	11 December 2027

MANAGEMENT SYSTEM CERTIFICATE



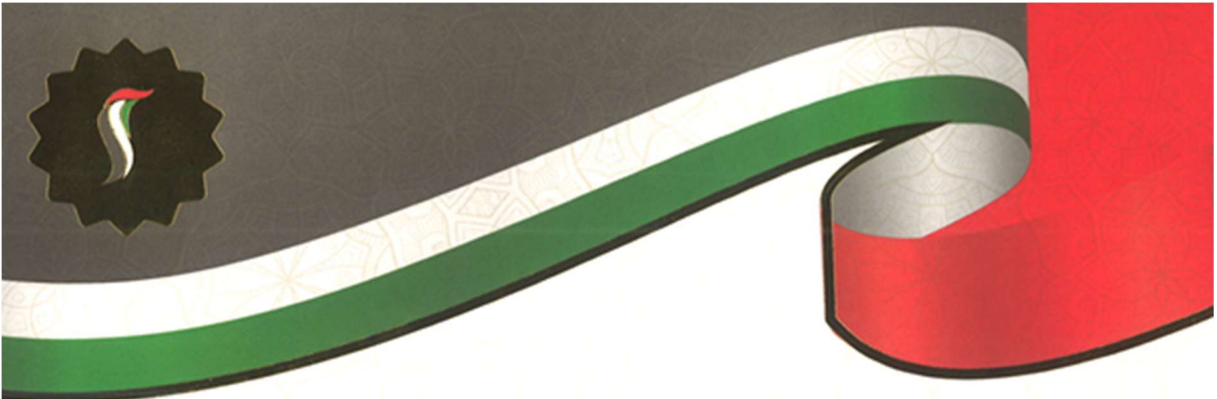
Authorised Signatory
KVQA Assessment Pvt. Ltd.

Website: www.iso-registration.com | Email: info@iso-registration.com

KVQA Assessment Private Limited is accredited to United Accreditation Foundation (UAF). UAF is internationally recognized by having a signatory status across multilateral recognition arrangement of International Accreditation Forum (IAF) and Asia Pacific Accreditation Cooperation (APAC).

The certificate is valid subject to successful completion of surveillance audits. Verify validity/status on www.iso-registration.com or on email at info@iso-registration.com

UAF address: 1060 Laskin Road, STE 12B/13B, Virginia Beach, VA 23451, United States of America



Chamber of
Commerce
News in UAE and the World Magazine
مجلة أخبار الغرف التجارية في الإمارات والعالم



PROMISE AND ACHIEVEMENTS

كتاب
ومجلة
الغرفة
التجارية
Book &
Magazine
CHAMBER OF
COMMERCE

تقديم
الهيئة العامة للتقويم والتخطيط

Certificate Of Appreciation

يسر مجلة أخبار الغرف التجارية في الإمارات والعالم

The Chamber of Commerce News in UAE and the World Magazine - Management

اننا نتقدم بجزيل الشكر والتقدير الى شركة
is Pleased to Extend its Appreciation and Gratitude to



elite
LANDSCAPE

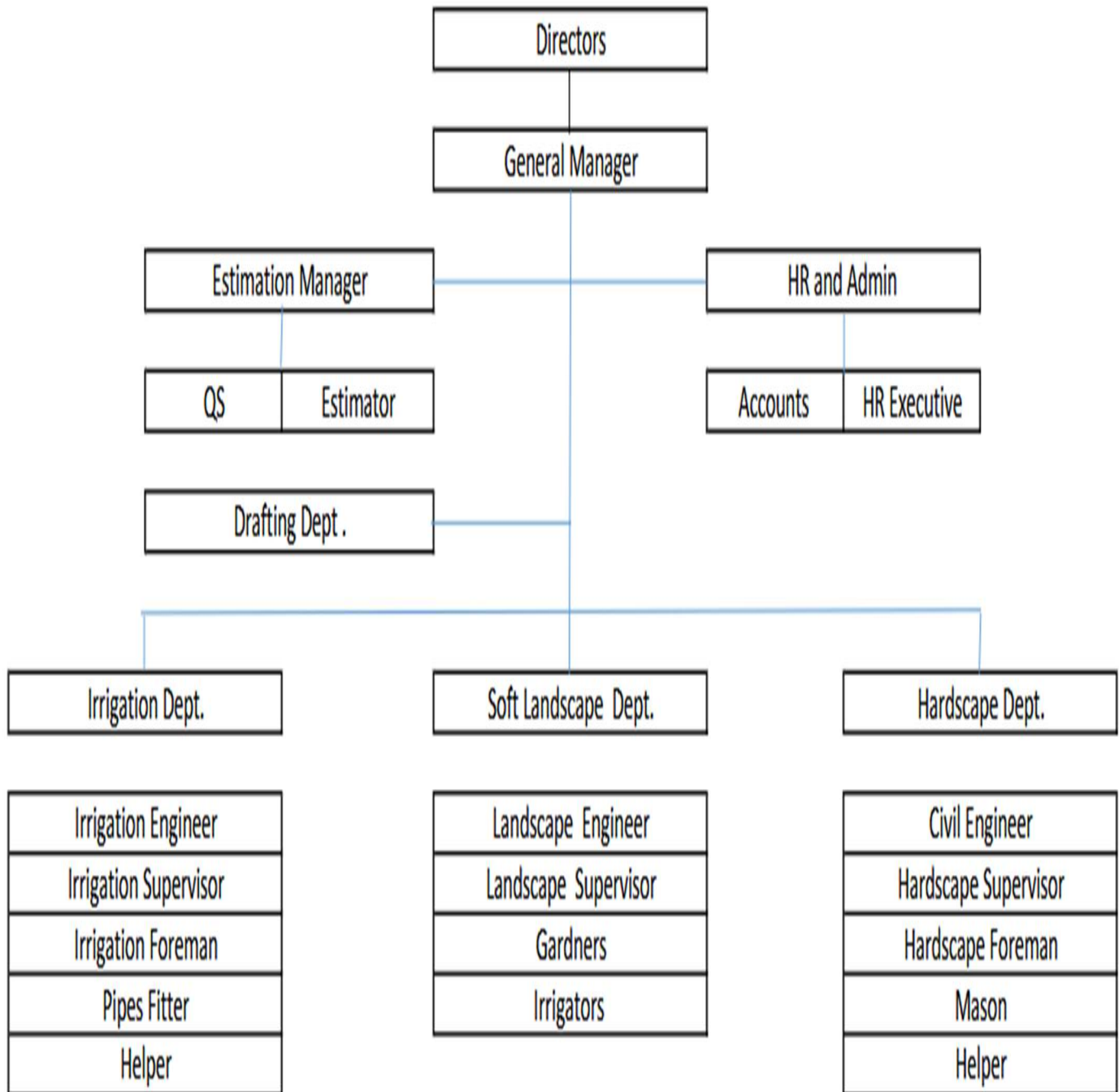
للمشاركة معنا

for Participating With us



في حب الإمارات
IN LOVE WITH UAE
ACHIEVEMENTS
2025 - 2026

Company organization chart



A photograph of an irrigation system in a field. Several black pop-up sprinkler heads are visible, each spraying water in a wide, fan-like pattern. The water droplets are captured in mid-air, creating a misty effect. The background is a lush green field under a bright sky. The text "OUR CLIENT LIST" is overlaid in the center of the image.

OUR CLIENT LIST



COMMERCIAL & OTHER PROJECTS



Sl no.	Project name	Main contractor/ consultant	Client	Value(AED)	Year	Status
1	Dewa staff accommodation Jabal ali- Irrigation works	Ali Moosa	Dewa	156,000.00	2020	completed
2	Marina landscape	Hills and fort	Alzorah	1,600,000.0	2021	Completed
3	Irrigation diversion at international city ENOC pump	Al Madar contracting	ENOC/ Nakheel	105,000.00	2022	Completed
4	Neem restaurant DIFC	LAADS	NEEM	87,000.00	2022	Completed
5	Irrigation reinstatement	City nights contr.	DM	13,000.00	2022	Completed
6	Khawaneej palace – irrigation works	DPC-pool	DPC	460,000.00	2022	Completed
7	Al zubair farm – Hepworth	-	Mr. Sayed	1,230,000.00	2022	Completed
8	Landscape and water feature work for Umm Al Quwain Museum	TMC group	Department of tourism and archeology	220,000	2024	Completed
9	Al Barsha 18 villas – street scape – landscape and irrigation and hardscape works	Al Rostamani	Abdulla Al Rostamani	1,550,000.00	2022	Completed
10	Julphar tower – RAK- upgradation	Elite	RAK properties	2,780,000	2023	Completed
11	Khawaneej – Farm house	Nitty Gritty	Nitty Gritty	3,240,000.00	2023	Completed
12	Mansion -Noorai island	elite	IFZA	532,000.00	2024	completed
13	Maidan – M77 apartments	Elite	Nitty gritty	345,000.00	2024	Completed
14	Nakheel – street scape	Blem	Nakheel	1,450,00.00	2024	completed
15	Dubai hills – swimming pool and landscape works	Sierra	Sierra	560,000.00	2024	Not started
16	MR. RASHID VILLA –NAD AL SHIBA –POOL AND LANDSCAPE	GULF ASIA	MR. Rashid	246,000.00	2024	On going
17	Villa – KAY private villa RAK with park	elite	KAY	940,000.00	2024	Not started
18	Cycle track – RTA	Al Ghanim	DM	5,800,000.00	2024	On hold
19	Demolition of concrete RAKP Julphar tower	Structural - SPME	RAKP	195,000.00	2024	Completed

COMMERCIAL & OTHER PROJECTS



20	Landscape and irrigation for 90 villas	RAKP	RAKP		2024	hold
21	Domus – Farm irrigation infra and landscape works	Domus	Alpha Beta properties	2,340,000.00	2024	Completed
22	Irrigation landscape @ podium Prestige - 1 JVC	Allied contracting	Prestige-1	380,000.00	2025	On going
23	Podium inter lock works	SPME	Greens-Emaar	170,000.00	2024	Completed
24	Auto village phase - 2 Irrigation project	Al-Futtaim Engineering & Technologies	Al-Futtaim Engineering & Technologies	1,20,000.00	2024	Completed
25	REPTON SCHOOL -Landscape, hardscape, mep and infrawork	Borghesi kidzink technical services l.l.c	Repton school	3,200,000	2025	Completed
26	RGS School- landscape,hardscape, mep and infrawork	Borghesi kidzink technical services l.l.c	RGS School	1,300,000	2025	Completed
27	Climber for landscape	Borghesi kidzink technical services l.l.c	Kidzink factory-DIC	89,922.25	2025	completed
28	Emirates IT College	SALEH constructions L.L.C	Emirates	15,000,000	2025	On going
29	Horizon School- hardscape works	Borghesi kidzink technical services l.l.c	Horizon school	1,000,000	2025	On going
30	Caravan park landscape , hardscape & mep works	AMBIENT STUDIO	Dubai Holding	1,500,000	2025	On going

Villas projects

Sl no	Project name	Main contractor	Client	Worth	Year	Status
1	Farid villa – kawaneej	Elite	Mr. Farid	36,000.00	2021	Completed
2	Faizal villa – kawaneej	Elite	Mr. Faizal	192,000.00	2021	Completed
3	Mr. peter villa – Dubai south	Elite	Mr. Peter	45,000.00	2021	Completed
4	Mr. Rafeeq villa – kawaneej	Elite	Mr. Rafeeq	113,000.00	2021	Completed
5	Villa 36 – Villanova	Elite	Mr. Melvin	56,000.00	2022	completed
6	Mr. Naser villa- Kawaneej	Elite	Mr. Naser	167,000.00	2022	completed
7	Villa 09 – Arabian aranches-2	NIL	Mr. Joji	63,000.00	2022	completed
8	Villa 67 – Arabian ranches -2	Elite	Ms. Jiji	35,000.00	2022	completed
9	Golf extension landscaping – emirates hills – Emaar for villa 19	Al Safeer contracting	Golf course – Emaar	185,000.00	2022	completed
10	Golf extension landscaping – emirates hills – Emaar for villa 20	Al Safeer contracting	Golf course – Emaar	127,000.00	2022	completed
11	Golf extension landscaping – emirates hills – Emaar for villa 21	Al Safeer contracting	Golf course – Emaar	134,000.00	2022	completed
12	Villa 92 – Dubai Hills	Elite	Mr. Charles	125,000.00	2022	completed
13	Mr. Atiq Villa -Ajman	Elite	Mr. Atiq	112,000.00	2023	completed
14	Villa H 41	Elite	Sangeetha	125,000.00	2023	completed
15	Villa H 42	Elite	Mr. Vijay	98,000.00	2024	completed
16	Villa – Mr. Rashid – Mirdif	KAY	KAY	180,000.00	2024	completed
17	Residential Villa G+1,on Plot No. 615-0709, at Nad Al Sheba Second, Dubai,	Fractional	Herald group	5,000,000.00	2024	completed



FIELD OF EXPERTISE

Soft Landscape:

We have got very experienced team to execute the landscaping activities in a professional way, as per DM, ADM, RTA standards and policies. We are well-known for the optimum requirement for any landscaping needs, which can avoid any unnecessary expenditure and delays for any projects. We have got well knowledge about the method of landscape earth works, as per planting varieties and their method of planting as per season, and plant selection as per site conditions.

Our services include, but are not necessarily limited to:

- Excavation, disposal, Preparation, cultivation of landscape areas,
- Supply and spreading of planting soil.
- Supply and planting of trees, Palms, shrubs, seasonal, and groundcovers,
- Supply and lay turf (lawn grass)
- Fixing of Green wall, creepers, and artificial grass. Vertical garden,
- Tree removal and replanting, etc.

We have got very talented and dedicated team for soft landscape and we have done projects in all emirates.



Existing Grass removal using sod cutting machine

This is how we remove grass and reuse, and our team is well trained to cut in any terrain, and we got all equipment and carry truck to transport it Anywhere to plant in same day



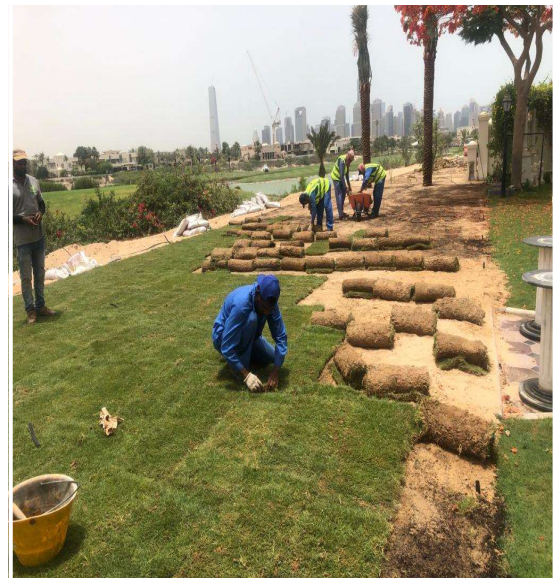
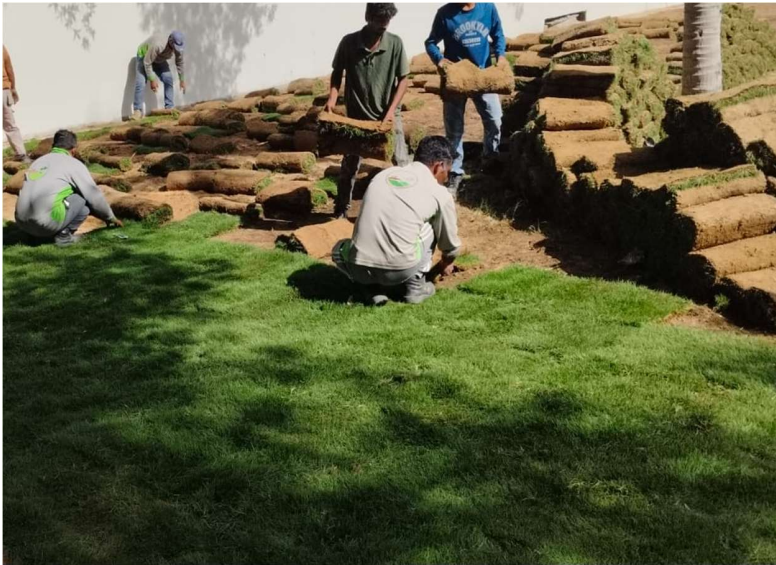
Re Planting the sod cut and rolled Grass in different locations.

Soil cutting and filling

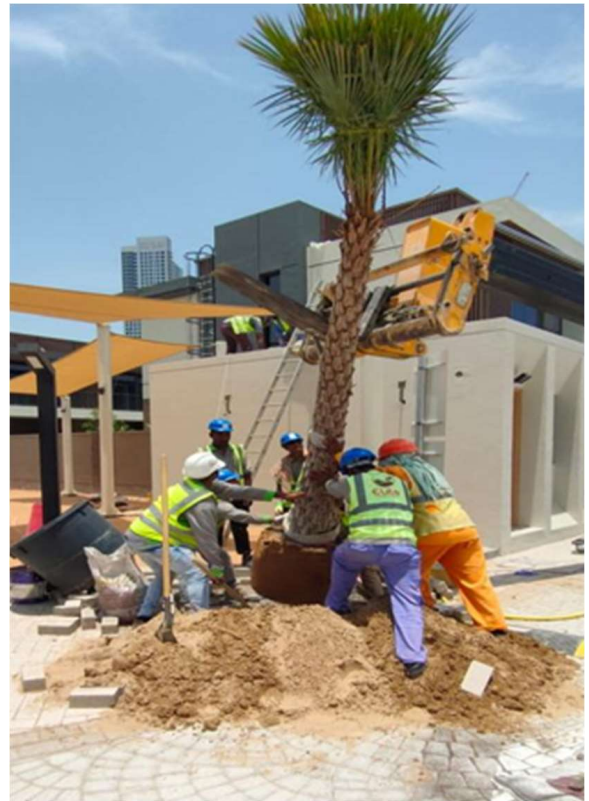
We are using different machineries for the earth works as per the site requirements, which are monitored by trained flagman and all works carrying with maximum care and safety only



Planting: Our team is skilled for all horticulture practice of planting like soil mixing with compost, fertilizer, soil additive, and planting of grass, ground cover shrubs and trees and palms, Mulching etc.

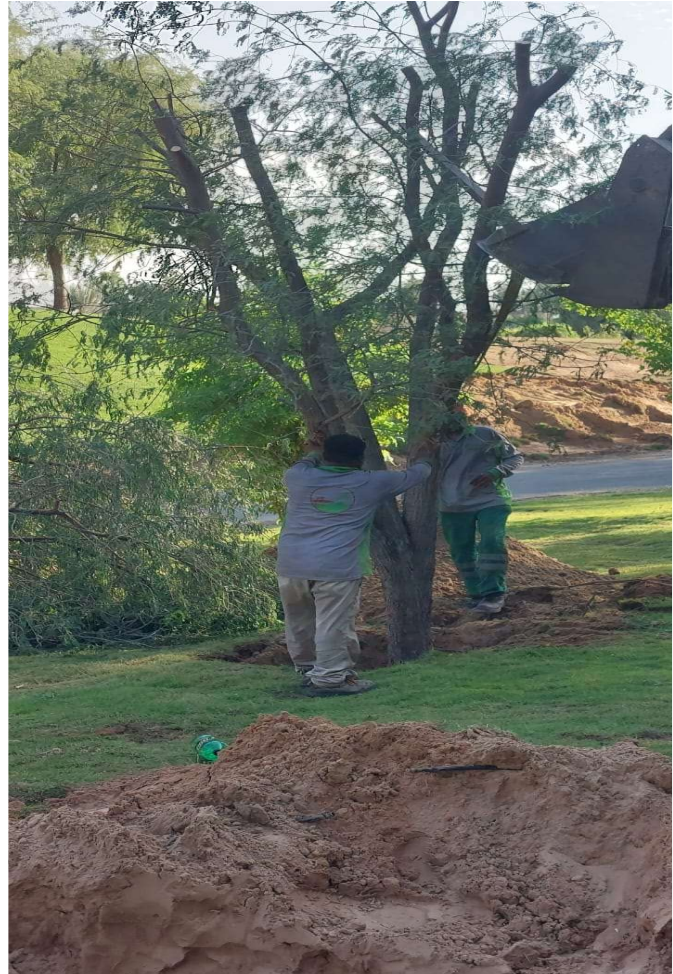


Trees and Palms planting in different projects



Tree removal and replanting

Tree Relocation works are carried as per standard horticulture practice and have very experienced gardeners to excavate, cut, thin, Pruning and shift the tree without major damages to roots and stem .



Irrigation:

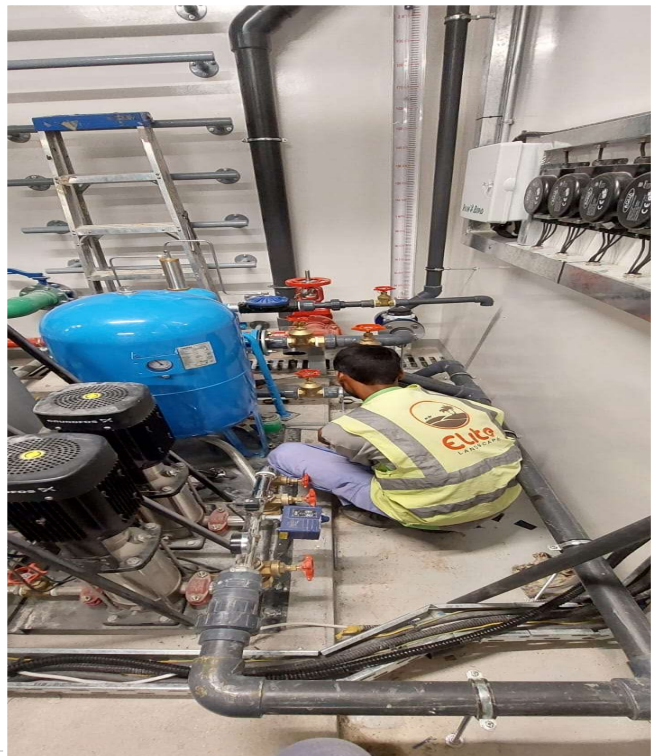
Landscape irrigation is a watering system that is **used to create and maintain lawns, ground cover, and custom landscapes**. The primary function of a landscape irrigation system is to ensure that water is spread regularly and evenly throughout any given landscape.

There are many methods to irrigate the landscape, like Drip irrigation, sprinkler irrigation, bubbler irrigation, and root zone irrigation. For a healthy landscape, the best irrigation method to be adopted as per the plant variety.

Irrigation main line works – uPVC up to 12” Dia and HDPE 315mm Dia



IRRIGATION AUTOMATION- PUMP & CONTROLLER



PUMP ROOM, RTU, WATER TANK AND HDPE, PPR PIPE WORKS



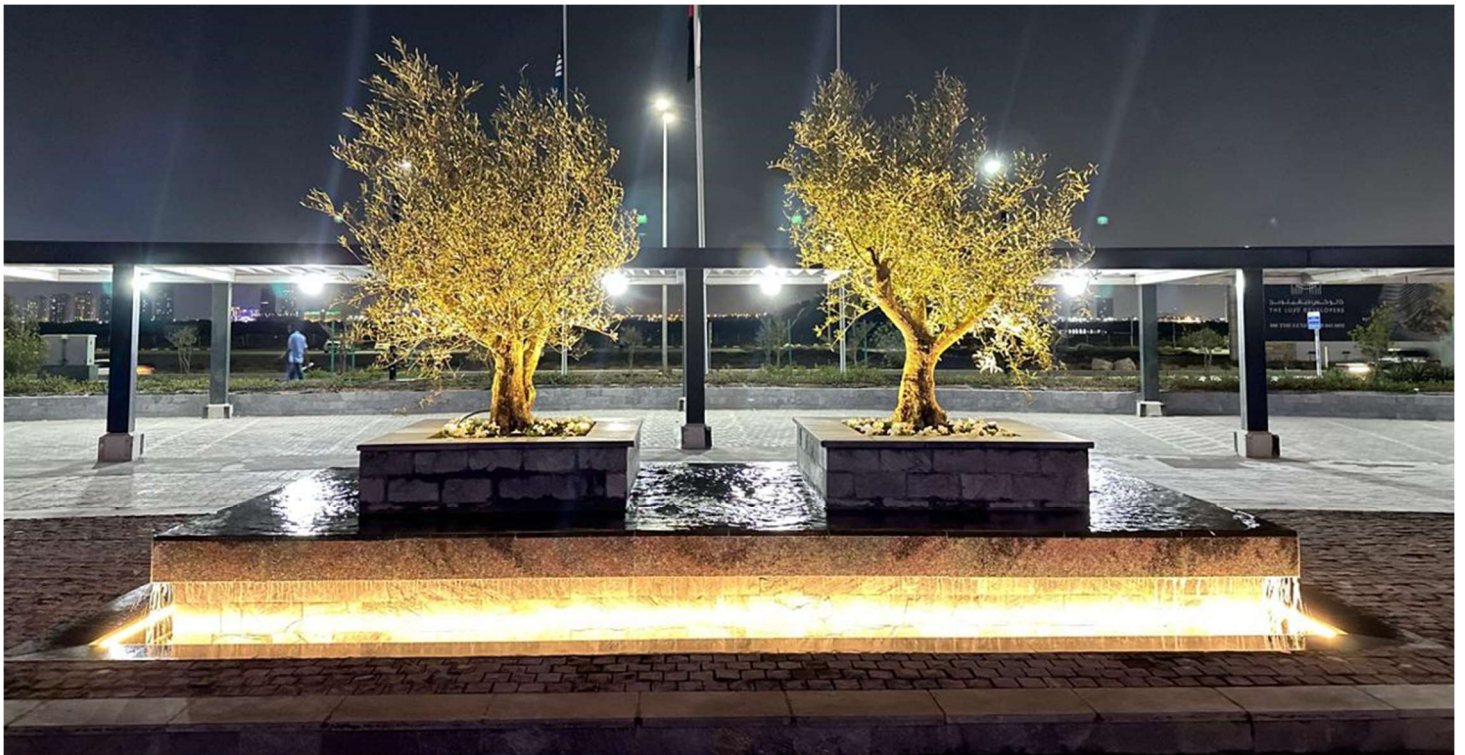
HARDSCAPE:

Hardscape refers to hard landscape materials in the built environment structures that are incorporated into a landscape. This can include paved areas, driveways, retaining walls, sleeper walls, stairs, walkways, and any other landscaping made up of hard wearing materials such as wood, stone, and concrete, as opposed to softscape, the horticultural elements of a landscape.

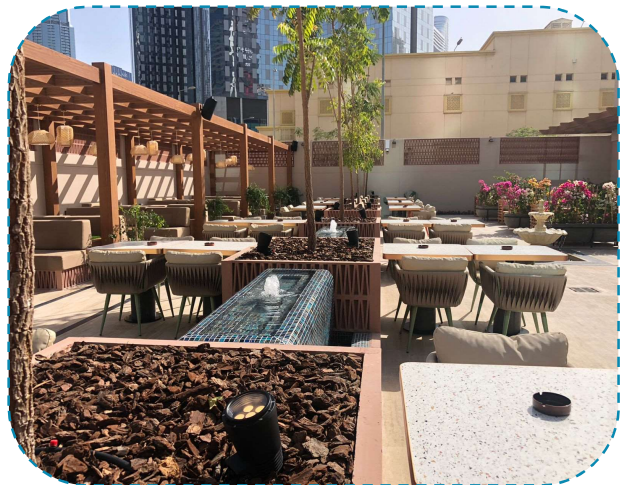
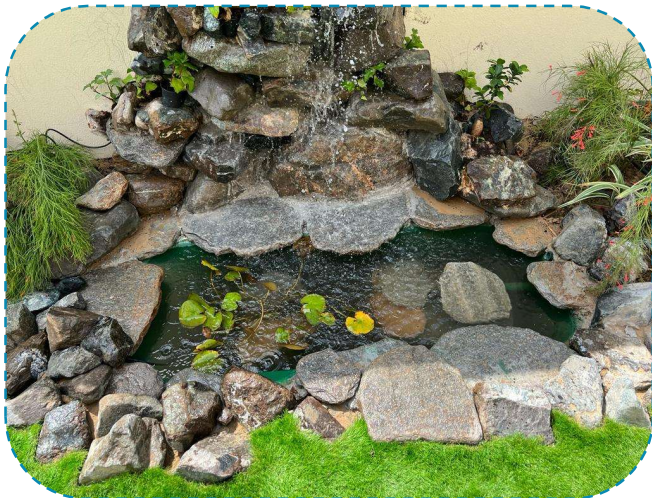
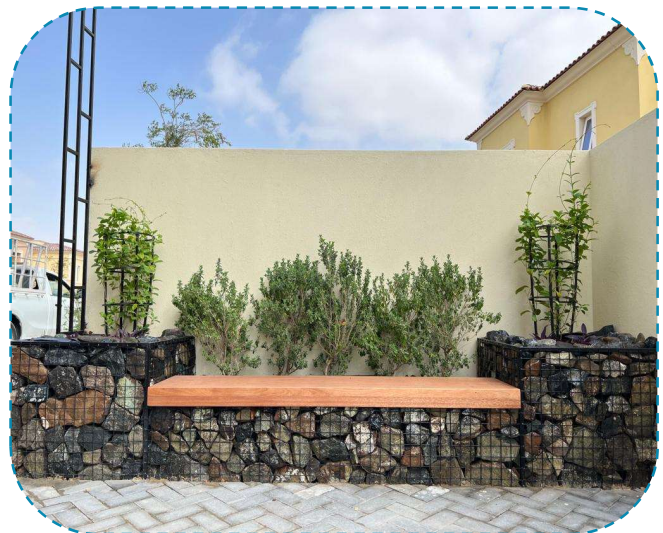
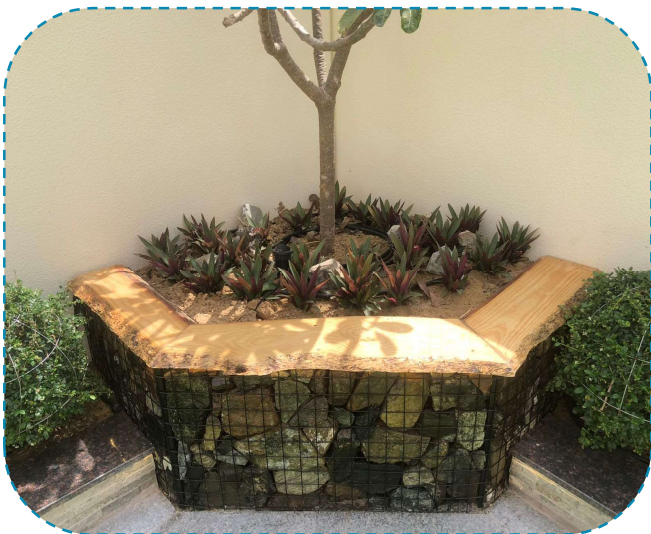
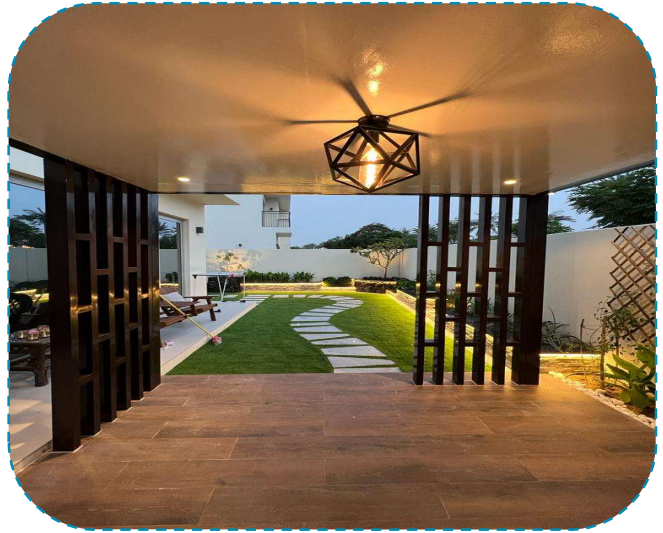
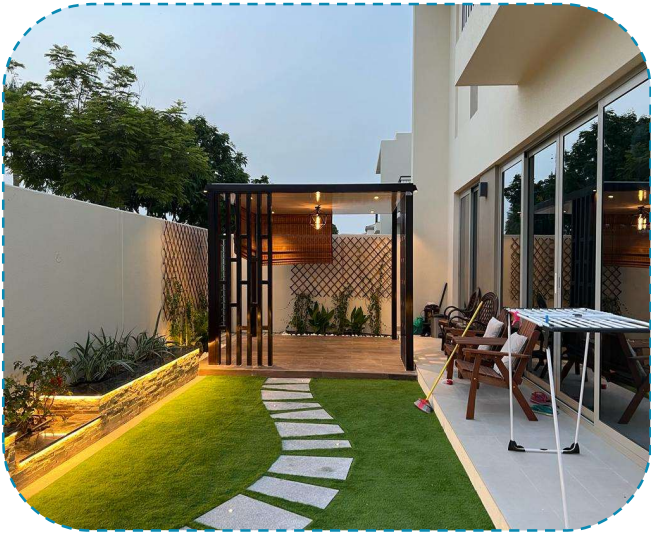
Walk ways using precast and stone paving.

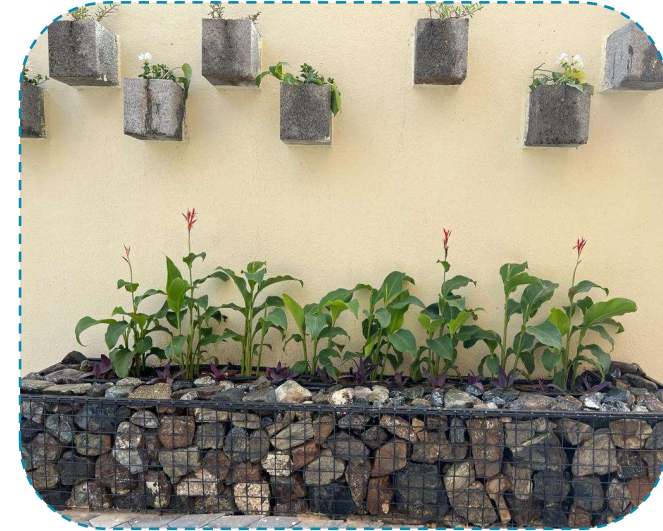
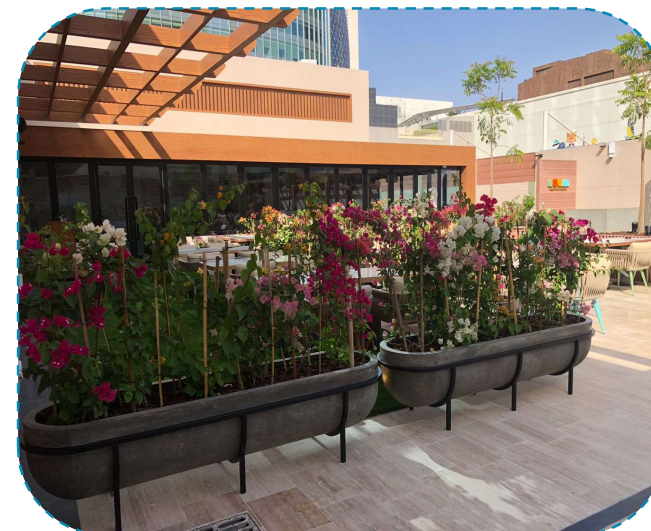
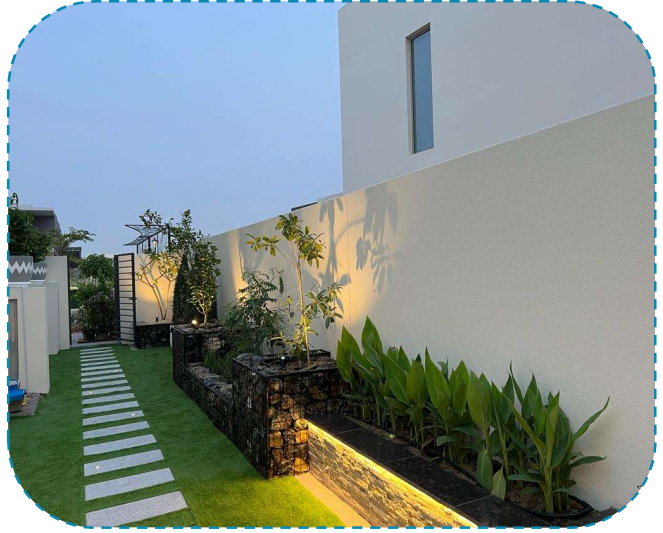
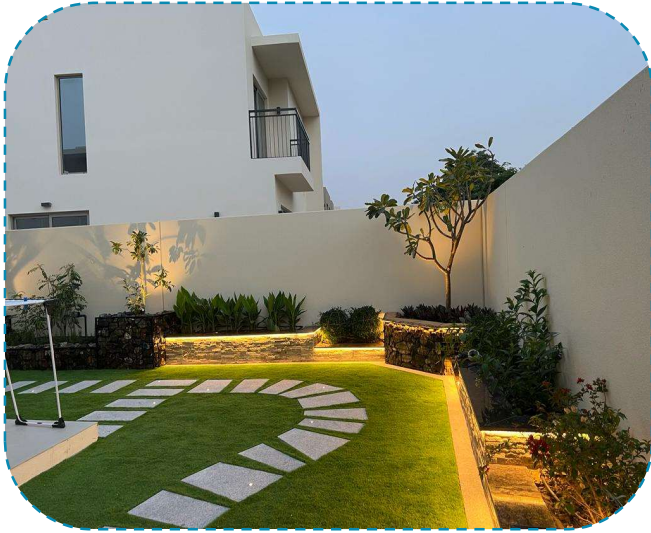


Water feature and pool work

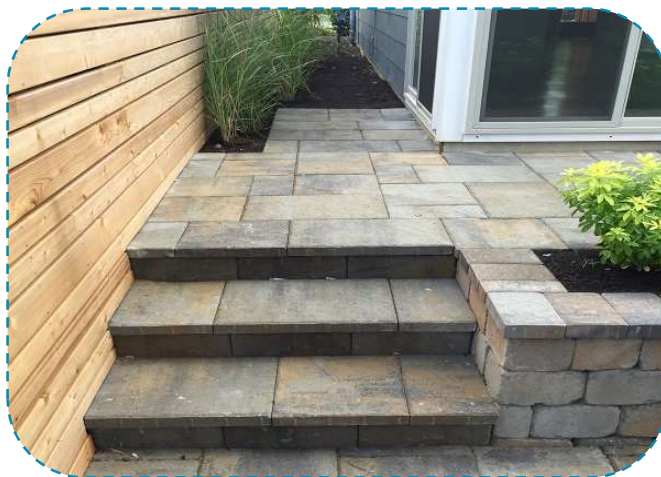


Artificial grass, Water feature, Pergolas, wood, and lighting works.

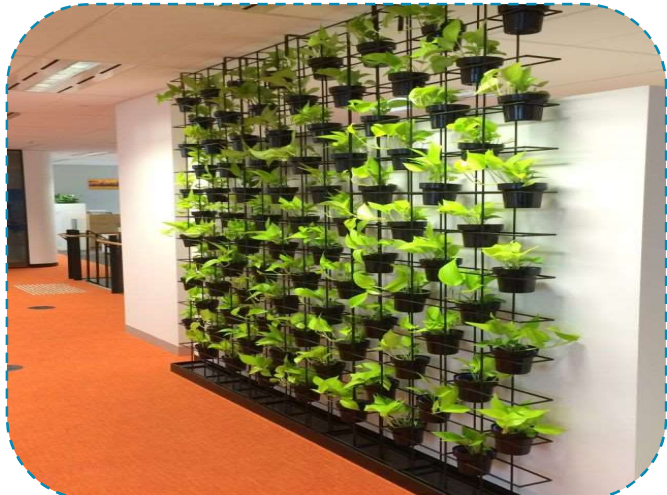
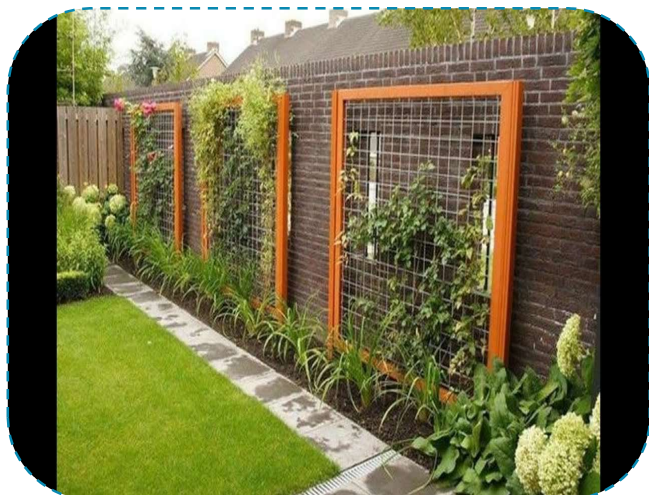




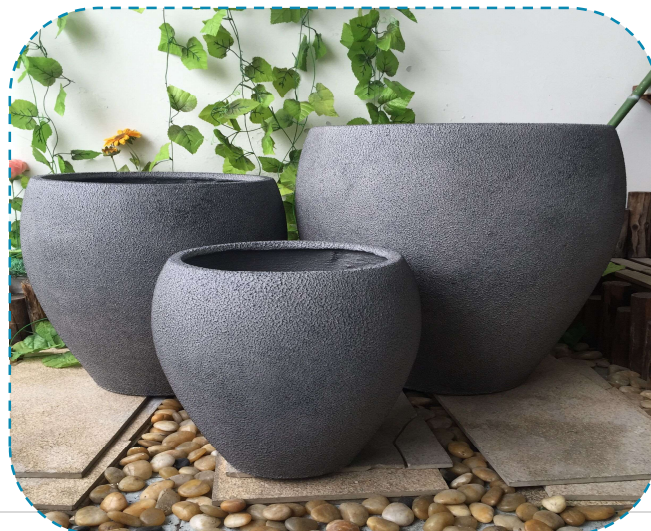
Steps and wood decking.



Landscape Flowers.



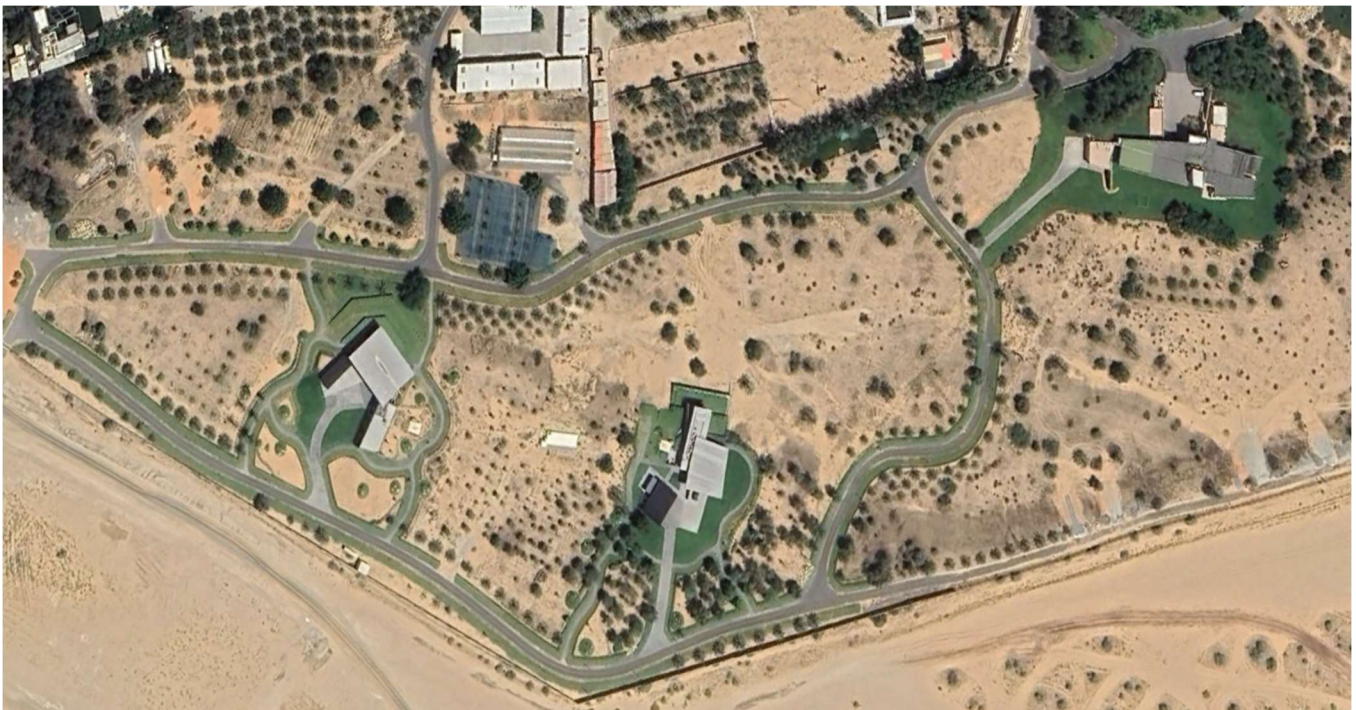
Planter Pots, outdoor and indoor.





FEW OF OUR DESIGNS

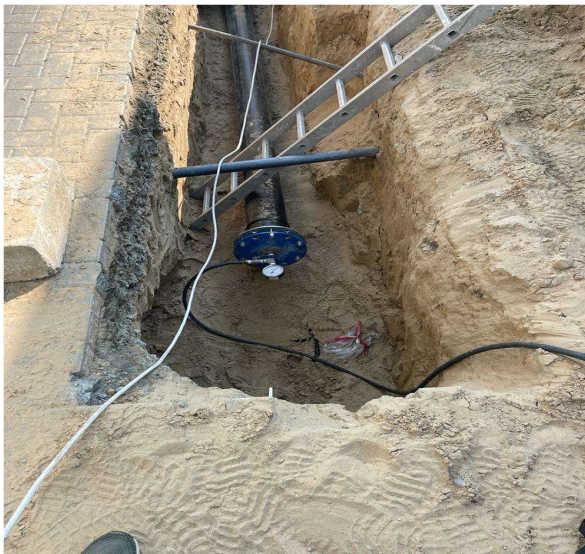
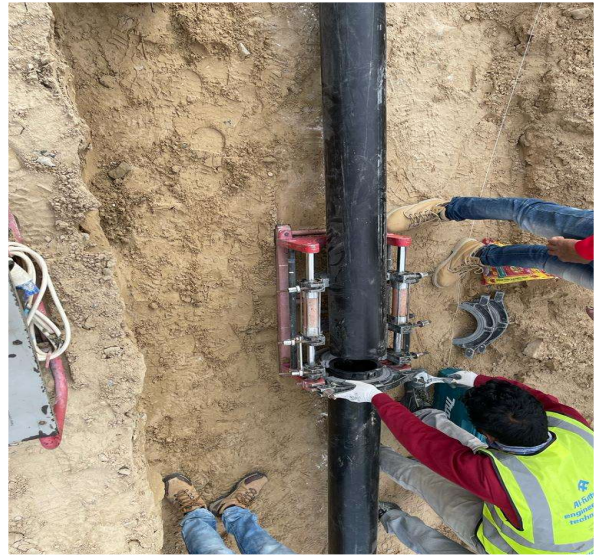
Random in-house designs and executed work gallery





PREVIOUS PROJECT WORK PHOTOS

Project: Irrigation diversion at the International City ENOC pump,
Scope: 315mm Dia HDPE and uPVC pipe works



Project: Private Farm- Al Zubair Sharjah (Client: Hepworth) Irrigation work

Scope of work mainly include supply and installation of uPVC main line and valves with installation of pump and controller for drip and sprinkler irrigation system for 12000 m2 area

Installed

- 6" uPVC main line
- 4" uPVC main line
- 36 solenoid valves
- 45m³/hr @ 60m head
- pump set 1 nos
- Decoder based controller -1 nos
- 1 RO plant



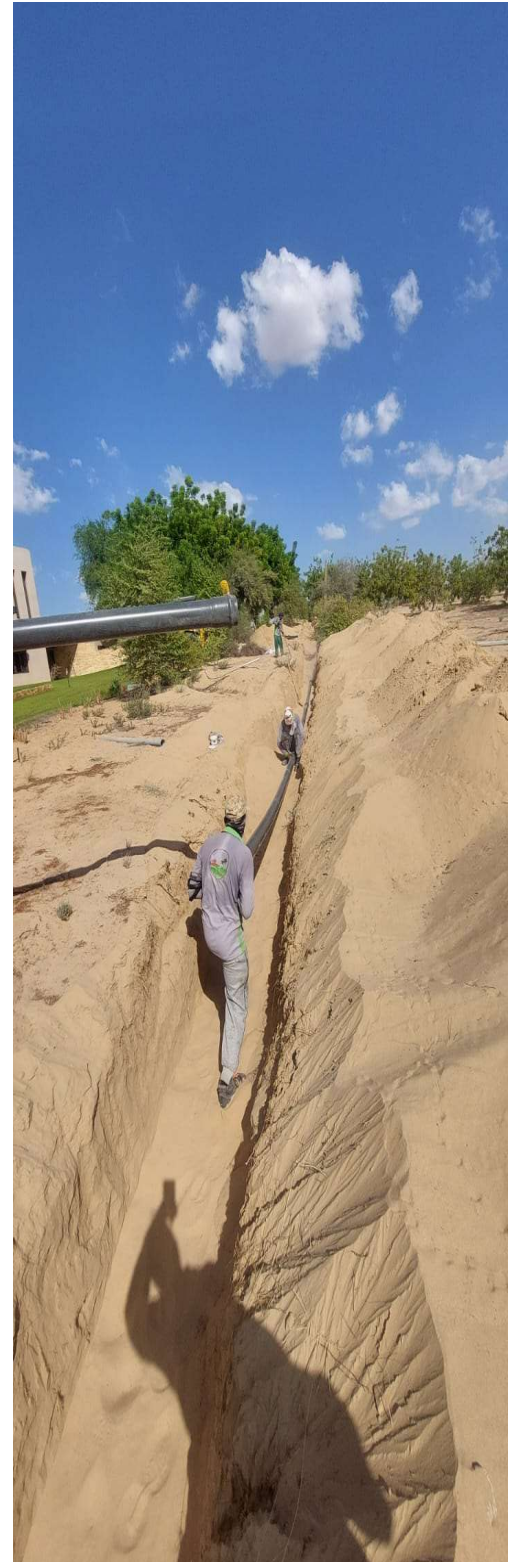
Project: – Farm- Khawaneej irrigation work (45,000 sqm area)

Scope: Irrigation and landscape, infrastructure network 3.5 Km for full farm development
Installed drip irrigation and sprinkler irrigation systems for ground cover, grass, and trees

The project was in 3 phases and mainly consist of 3 houses and 2 Km internal roads full landscape

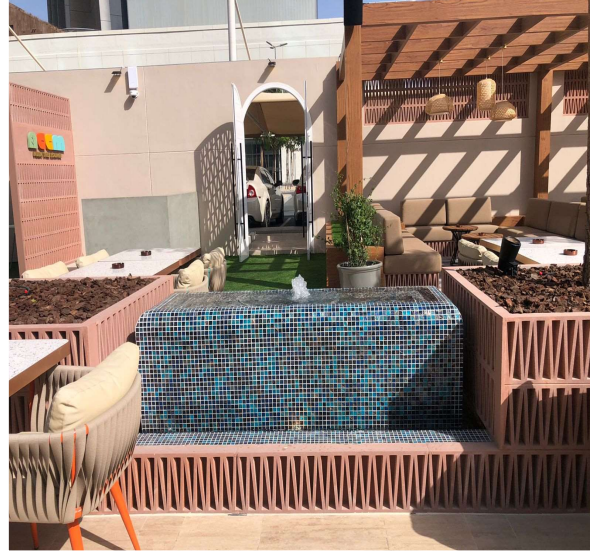
Total area of landscape is 45,000 sqm aera

We have installed – 4 mini pump rooms and underground water tanks
140 solenoid valves
4 decoded based controllers
100,000 m drip tubes in this project



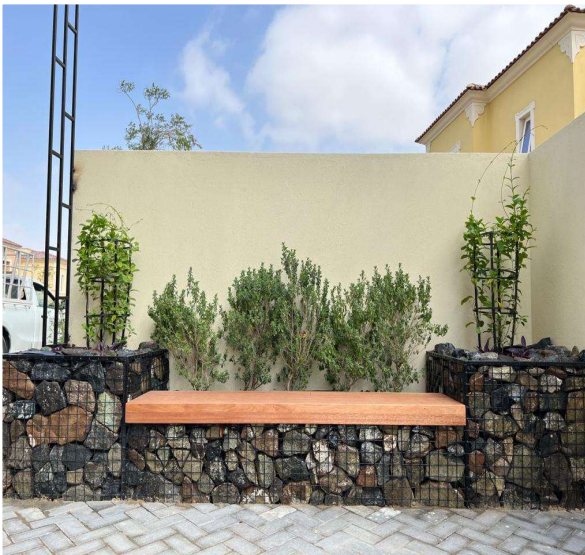
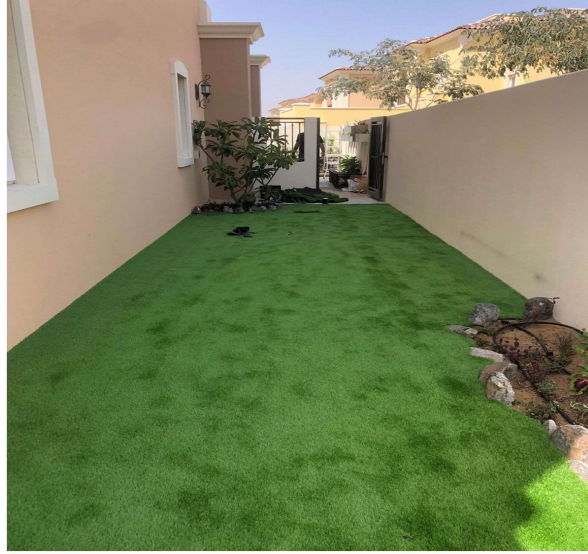
Project: Landscape, work at Neem restaurant, DIFC, Dubai

Scope: artificial grass, irrigation, water feature, crazy stepping stone irrigation, and planting



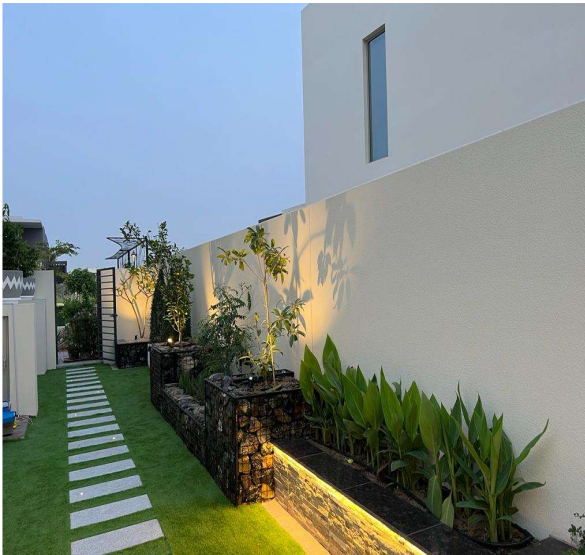
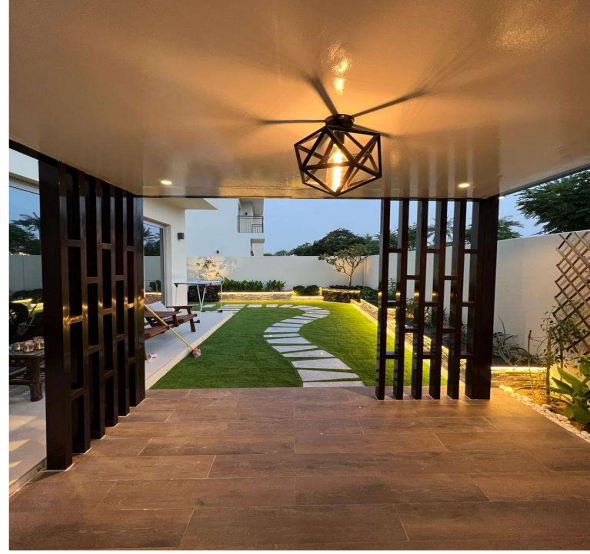
Project: Villa 69 – Villanova

Scope: Irrigation, hardscape, planting, water feature, pergola, gabion wall, benches, artificial grass, etc.



Project: Villa 9 – Arabian Ranches

Scope: Irrigation, hardscape, planting, pergola, gabion wall, benches, artificial grass, trellis, lighting, etc.



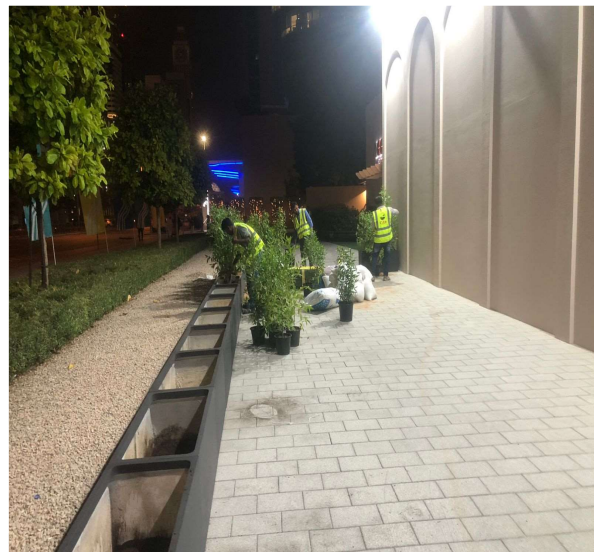
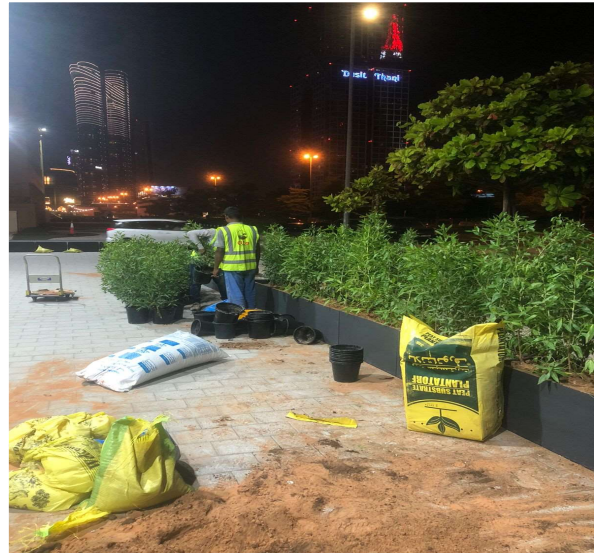
Project: Golf course extension – Emirates Hills

Scope: Irrigation, hardscape, softscape, and lighting



Project: Neem restaurant- DIFC

Scope: Artificial grass, hardscape, Pot planting, and climber fixing.



Project: Kawaneej private villa

Scope: Irrigation and MEP



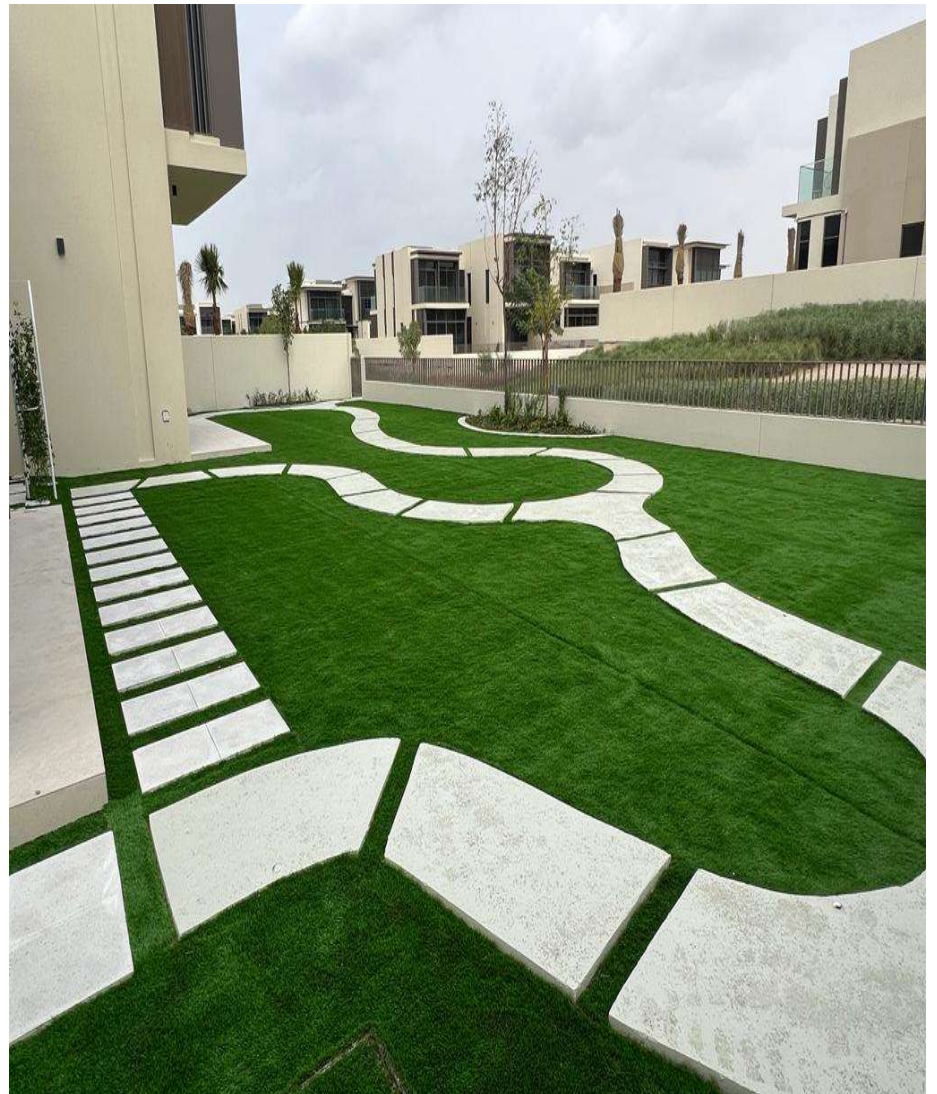
Project: UAQ Museum

Scope: Irrigation, hardscape, and softscape

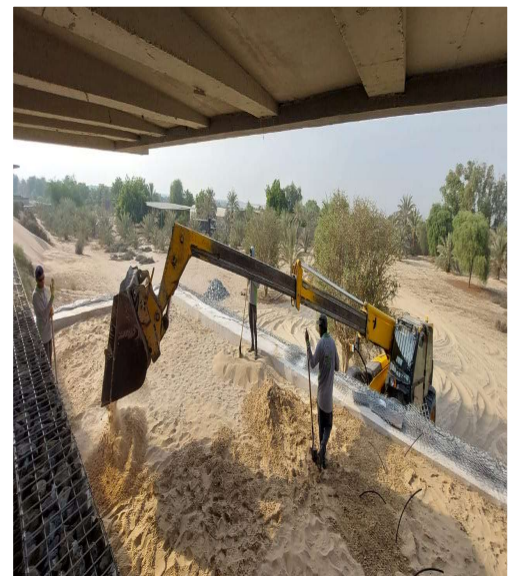
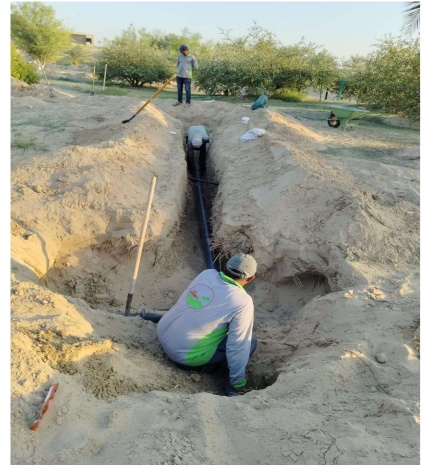


Project: Golf place Dubai hills – Villa 92

Scope: Irrigation, hardscape, and softscape



Khawaneej - Nitty gritty Irrigation photos



PROJECT: RGS School Landscape hardscape, MEP, and Infracwork



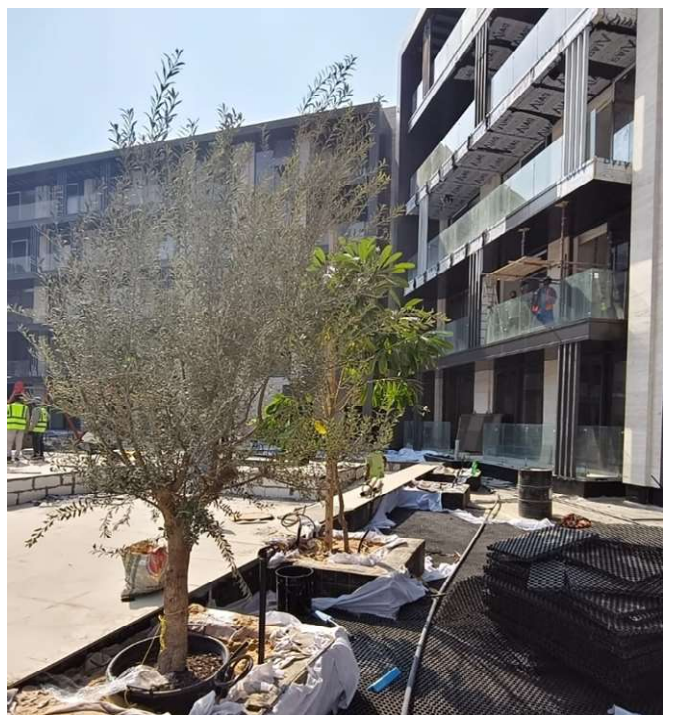
PROJECT: REPTON SCHOOL Landscape, Hardscape, MEP, and Infrawork



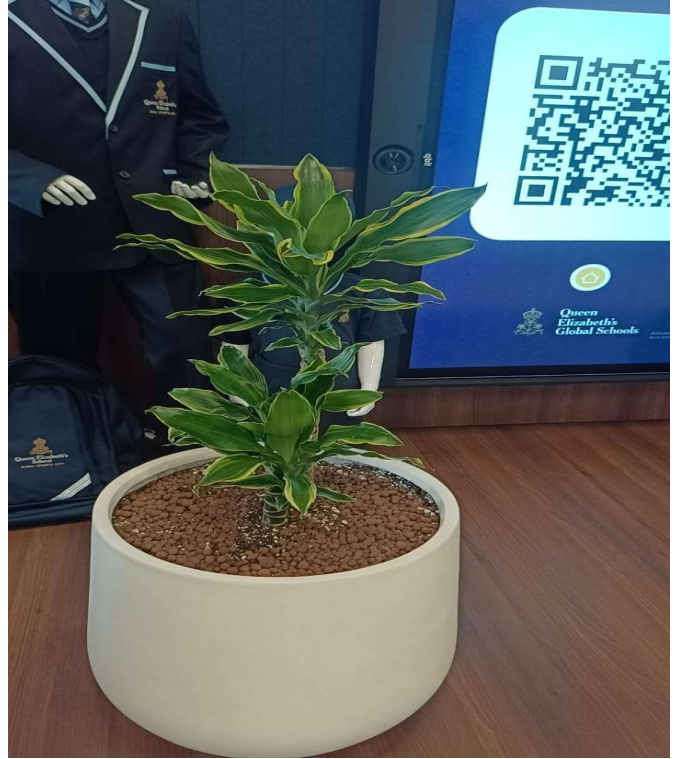
PROJECT NAME: Royal Manor Swimming pool – Nad Al Sheba



PROJECT: PODIUM PRESTIGE – 1 JVC Irrigation Landscape



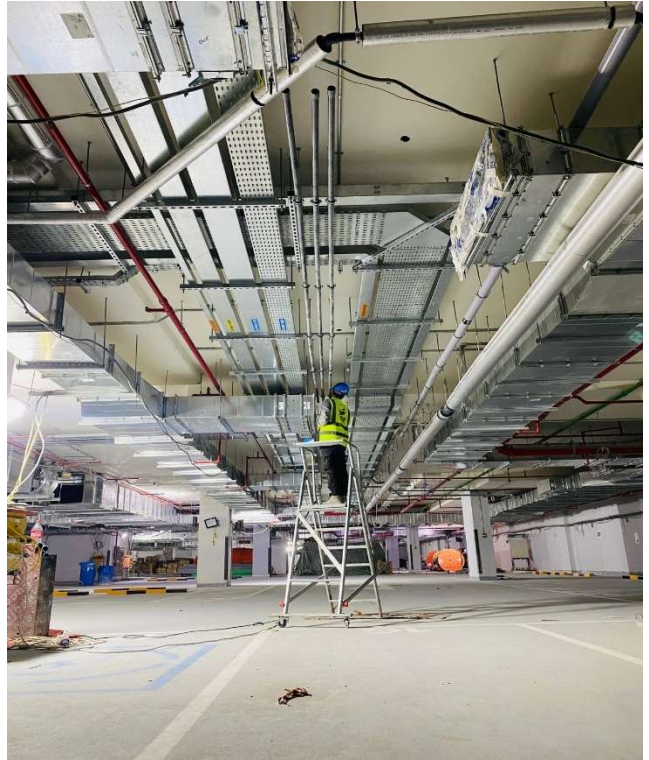
PROJECT: QUEEN ELIZABETH SCHOOL, Climber for Landscape



PROJECT: Residential Villa (Herald) – Landscaping and Irrigation



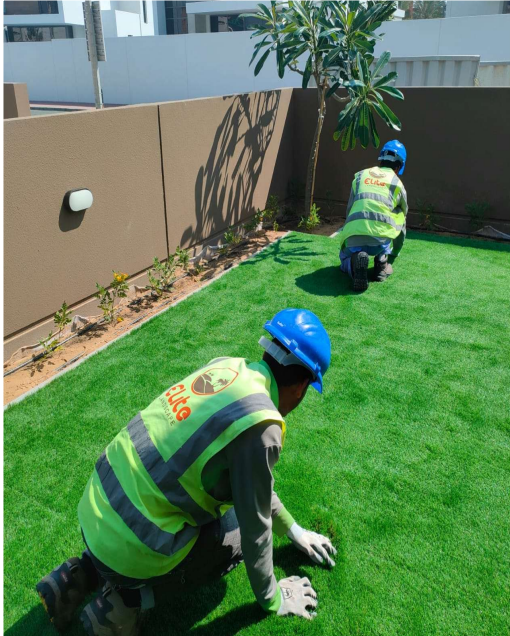
PROJECT: Al Futtaim BYD Showroom, Al Quiz



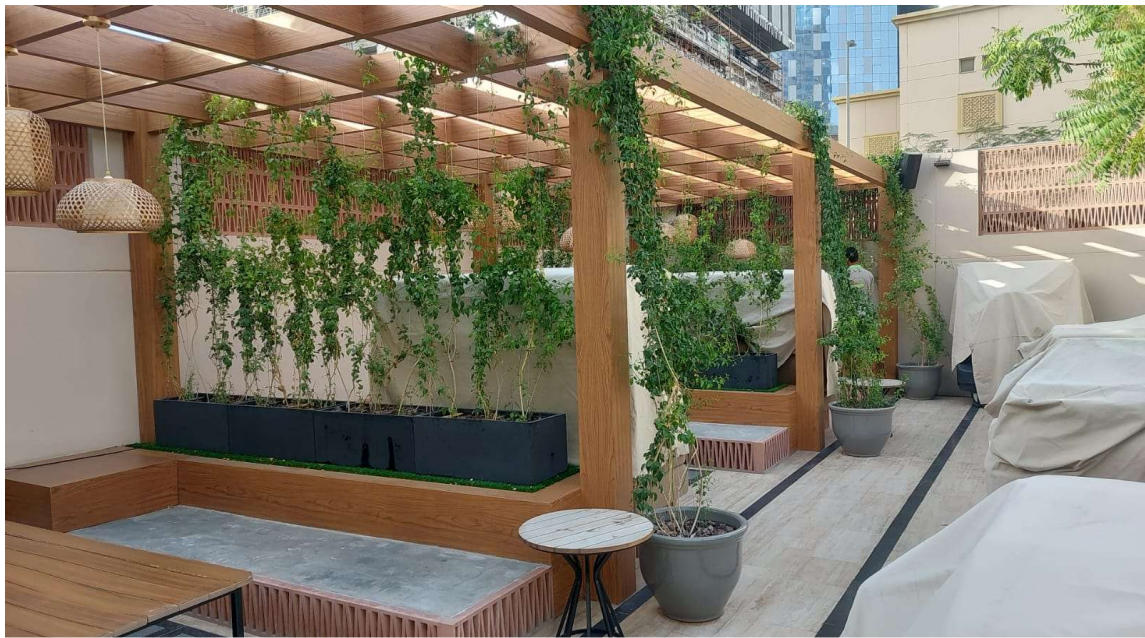
Project: BARSHA 18 VILLA

Client: Al Rostam ani petal LLC

Scope: Irrigation, softscape, hardscape, and artificial grass fixing

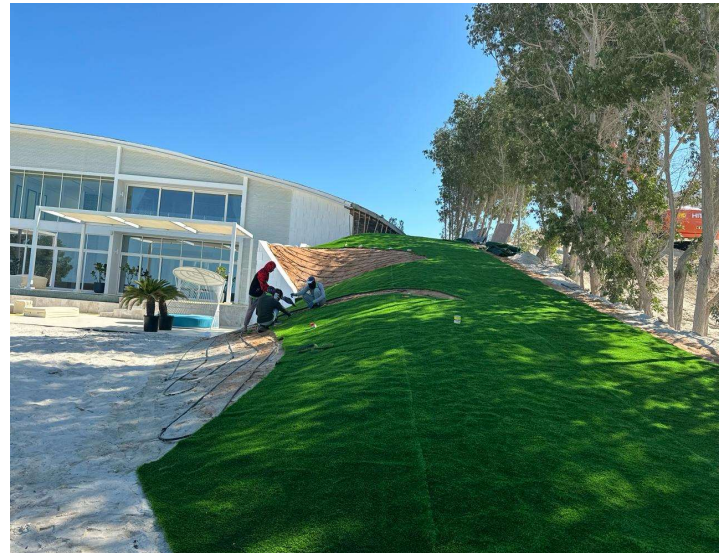
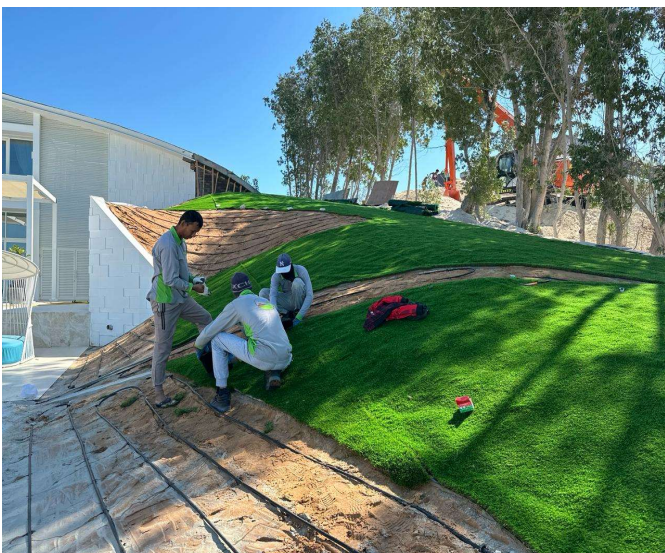


Project: Neem restaurant DIFC



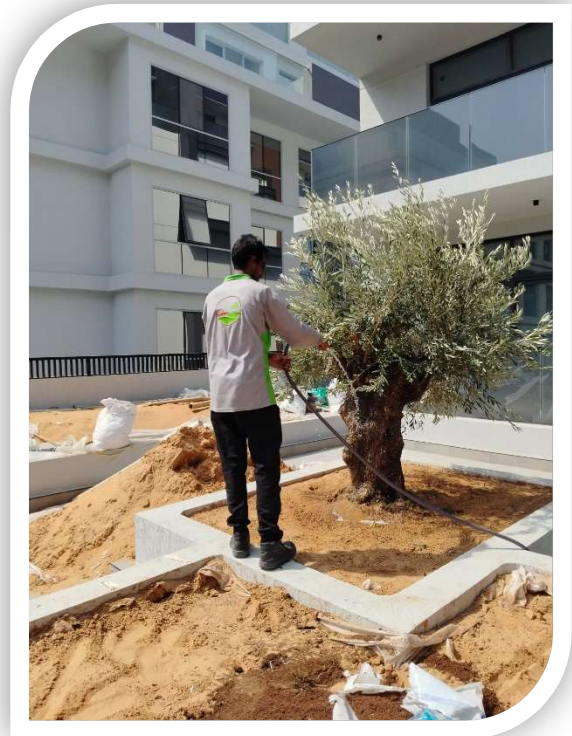
Noorai island

– Near Saadiyat island in Abu Dhabi, our scope of work was to reinstate existing natural grass – fixing new palms, tree removal and replanting, fixing of new artificial grass 3000 sqm area, planting of ground cover and shrubs and trees etc. Installation of New irrigation system with pump and controller for existing and new landscape.





**M77 alpha beta properties – olive
planting**



RAK PROPERTIES –
SLOPE AREA
LANDSCAPE WORK
500M IN THE ROAD- 23
PLANTERS

Scope

Existing Inter local
removal in slope
Making of planter boxes
And planting with new
irrigation system



PROJECT:- EMIRATES IT COLLEGE (HARDSCAPE & SOFTSCAPE WORKS)- ONGOING





PROJECT:- HATTA CARAVAN PARK (ONGOING)





ELITE MANPOWER

SL NO	EMP NO	EMPLOYEE NAME	DESIGNATION
1	EL-EMP-0001	SEBY KARANCHIRAKKAL JOY	GENERAL MANAGER
2	EL-EMP-0002	ANOOP KUNDOUR VALAPPIL	LANDSCAPE DESIGNER
3	EL-EMP-0003	BISHU DAS SUNIL DAS	SUPERVISOR
4	EL-EMP-001	MOHD AHETESHAM GAYASUDDIN PATHAN	AGRICULTURAL ENGINEER
5	EL-EMP-002	RAKIB HOSEN A	GARDEN WORKER
6	EL-EMP-003	JAHANGIR SAIFUL ISLAM	PLUMBER ASSISTANT
7	EL-EMP-004	MD PARVEZ MIA	GARDEN WORKER
8	EL-EMP-005	PALTAN BISWAS	MASON
9	EL-EMP-006	PROBIR BISWAS	MASON
10	EL-EMP-007	AVTAR SINGH PAL SINGH	GARDEN WORKER
11	EL-EMP-008	JASWINDER SINGH	GARDEN WORKER
12	EL-EMP-009	PREM SINGH DIYAL SINGH	GARDEN WORKER
13	EL-EMP-010	SINAN NIWAMANYA	GARDEN WORKER
13	EL-EMP-011	HASSAN WAISWA	GARDEN WORKER
15	EL-EMP-012	GIJO JOSEPH	ELECTRICIAN
16	EL-EMP-013	MUHAMMED SAHAD	PROCUREMENT
17	EL-EMP-014	VAMSHI AKUNURI ANJIAH AKUNURI	SUPERVISOR
18	EL-EMP-015	MOHAMED AZIR VADAKKETHIL	CIVIL ENGINEER
19	EL-EMP-017	OGOUGBEMI ODJI	GARDEN WORKER
20	EL-EMP-018	AFFEEFA ABBAS MELE VALAPPIL	PROJECT COORDINATOR
21	EL-EMP-019	NAVIN THOMAS	SUPERVISOR
22	EL-EMP-020	RESHMA PUTHIYA VEETIL	HR AND ADMIN
23	EL-EMP-021	KARUPAIYYA ADAIKAPPAN	PLUMBER
24	EL-EMP-022	PRAYAGH KRISHNAKUMAR	QA/QC ENGINEER
25	EL-EMP-023	MOHAMED AFAN ATHAMBAWA	DRAFTSMAN
26	EL-EMP-024	HAMADI LUBANGA	GARDEN WORKER
27	EL-EMP-025	SUGHESH PADMANABHAN	PROJECT MANAGER
28	EL-EMP-026	JUNAID KOLLANTHODIKA	DRIVER CUM SUPERVISOR
29	EL-EMP-027	SURESH KUMAR SISUPALAN	DRIVER CUM SUPERVISOR
30	EL-EMP-028	SADIQ UR REHMAN	SAFETY OFFICER
31	EL-EMP-029	SAMUEL PIUS	STOREKEEPER
32	EL-EMP-030	AGNAL VINCENT	ACCOUNTANT
33	EL-EMP-031	AMRITPAL SINGH	GENERAL SUPERVISOR

HSE policy

GENERAL PRINCIPLES

Elite Landscaping is committed to providing a work environment which, so far as is practicable, protects the health, Safety and welfare of all the workplace and encourages safe working practices. No task is so important as to compromise health and safety. Appropriate consideration must be given to determining a safe and healthy work method for each and every activity. In order to support this policy, Elite Landscaping will:

- Comply with all relevant legislation and statutory requirements, codes of practice and industry standards, and make adequate provisions of resources to meet these requirements;
- Promote health and safety awareness and the development of healthy and safe working procedures;
- Provide a healthy and safe work environment;
- Provide information, training, instruction and adequate protective equipment;
- Consult with employees on health and safety matters and on ways to reduce workplace hazards and improve control systems;
- Ensure visitors and others (such as couriers and maintenance personnel) are not exposed to health and safety risks from office activities or processes;
- Maintain effective accident analysis and hazard reporting systems; and
- Encourage the rehabilitation of injured employees.

Employees and visitors for their part will be expected to:

- Comply with all relevant legislation and statutory requirements and working procedures, codes of practice and industry standards;
- Take reasonable care to protect the health and safety of themselves, fellow employees, and other such as clients and members of the public;
- Perform work duties in a responsible and safe manner;
- Comply with reasonable instructions given by the company;
- Report and where appropriate, rectify hazards and participate in the analysis of accidents; and
- Accept responsibility for protecting themselves and others.

These administrative guidelines aim to:

- Raise awareness of health and safety issues in the office;
- Help identify existing and potential health and safety problems;
- Offer solutions and advice;
- Give guidance on where to go for further information and help; and
- Encourage consultation on health and safety issues.

Seby Joy
General Manager

A handwritten signature in blue ink, appearing to read "Seby Joy", is written over a horizontal line.